



HAL
open science

Neoadjuvant chemotherapy for borderline resectable and upfront resectable pancreatic cancer increasing overall survival and disease-free survival?

Violette Fossaert, Antonio Mimmo, Rami Rhaiem, Linda J Rached, Mathilde Brasseur, Mathias Brugel, Francesca Pegoraro, Stephane Sanchez, Olivier Bouché, Reza Kianmanesh, et al.

► To cite this version:

Violette Fossaert, Antonio Mimmo, Rami Rhaiem, Linda J Rached, Mathilde Brasseur, et al.. Neoadjuvant chemotherapy for borderline resectable and upfront resectable pancreatic cancer increasing overall survival and disease-free survival?. *Frontiers in Oncology*, 2022, 12, <10.3389/fonc.2022.980659>. <hal-04099959>

HAL Id: hal-04099959

<https://univ-reims.hal.science/hal-04099959v1>

Submitted on 17 May 2023

HAL is a multi-disciplinary open access archive for the deposit and dissemination of scientific research documents, whether they are published or not. The documents may come from teaching and research institutions in France or abroad, or from public or private research centers.

L'archive ouverte pluridisciplinaire **HAL**, est destinée au dépôt et à la diffusion de documents scientifiques de niveau recherche, publiés ou non, émanant des établissements d'enseignement et de recherche français ou étrangers, des laboratoires publics ou privés.



Distributed under a Creative Commons CC BY 4.0 - Attribution - International License



OPEN ACCESS

EDITED BY

Riccardo Memeo,
Ospedale Generale Regionale F. Miulli,
Italy

REVIEWED BY

Francesca Marcon,
IRCCS Ca 'Granda Foundation
Maggiore Policlinico Hospital, Italy
Ingrid Garajova,
University Hospital of Parma, Italy

*CORRESPONDENCE

Tullio Piardi
tpiardi@chu-reims.fr

[†]These authors share first authorship

SPECIALTY SECTION

This article was submitted to
Gastrointestinal Cancers: Hepato
Pancreatic Biliary Cancers,
a section of the journal
Frontiers in Oncology

RECEIVED 28 June 2022

ACCEPTED 06 September 2022

PUBLISHED 25 October 2022

CITATION

Fossaert V, Mimmo A, Rhaïem R,
Rached LJ, Brasseur M, Brugel M,
Pegoraro F, Sanchez S, Bouché O,
Kianmanesh R and Piardi T (2022)
Neoadjuvant chemotherapy for
borderline resectable and upfront
resectable pancreatic cancer
increasing overall survival and
disease-free survival?
Front. Oncol. 12:980659.
doi: 10.3389/fonc.2022.980659

COPYRIGHT

© 2022 Fossaert, Mimmo, Rhaïem,
Rached, Brasseur, Brugel, Pegoraro,
Sanchez, Bouché, Kianmanesh and
Piardi. This is an open-access article
distributed under the terms of the
Creative Commons Attribution License
(CC BY). The use, distribution or
reproduction in other forums is
permitted, provided the original
author(s) and the copyright owner(s)
are credited and that the original
publication in this journal is cited, in
accordance with accepted academic
practice. No use, distribution or
reproduction is permitted which does
not comply with these terms.

Neoadjuvant chemotherapy for borderline resectable and upfront resectable pancreatic cancer increasing overall survival and disease-free survival?

Violette Fossaert^{1†}, Antonio Mimmo^{1†}, Rami Rhaïem¹,
Linda J. Rached¹, Mathilde Brasseur², Mathias Brugel²,
Francesca Pegoraro^{1,3}, Stephane Sanchez⁴, Olivier Bouché²,
Reza Kianmanesh¹ and Tullio Piardi^{1,5*}

¹Department of Oncological Digestive Surgery, Hepatobiliary and Pancreatic Surgery Unit, University Reims Champagne-Ardenne, Reims, France, ²Department of Digestive Medical Oncology, University Reims Champagne-Ardenne, Reims, France, ³Division of Hepato-Bilio-Pancreatic, Minimally Invasive, Robotic Surgery and Kidney Transplantation, Department of Clinical Medicine and Surgery, Federico II University Hospital, Naples, Italy, ⁴Pôle Territorial Santé Publique et Performance des Hôpitaux Champagne Sud, University Reims Champagne-Ardenne, Troyes, France, ⁵Department of Surgery, Hepato-Bilio-Pancreatic and Metabolic Unit, University Reims Champagne-Ardenne, Troyes, France

Background: Pancreatic ductal adenocarcinoma (PDAC) is the most common pancreatic neoplasm. Surgery is the factual curative option, but most patients present with advanced disease. In order to increase resectability, results of neoadjuvant chemotherapy (NAC) on metastatic disease were extrapolated to the neoadjuvant setting by many centers. The aim of our study was to retrospectively evaluate the outcome of patients who underwent upfront surgery (US)-PDAC and borderline (BR)-PDAC, and those resected after NAC to determine prognostic factors that might affect the outcome in these resected patients.

Methods: One hundred fifty-one patients between January 2012 and March 2021 in our department were reviewed. Epidemiological characteristics and pre-operative induction treatment were assessed. Pathological reports were analyzed to evaluate the quality of oncological resection (R0/R1). Post-operative mortality and morbidity and survival data were reviewed.

Results: One hundred thirteen patients were addressed for US, and 38 were considered BR and referred for surgery after induction chemotherapy. The pancreatic resection R0 was 71.5% and R1 28.5%. pT3 rate was significantly higher in the US than BR (58,4% vs 34,2%, p= 0.005). The mean OS and DFS rates were 29.4 months 15.9 months respectively. There was no difference between OS and DFS of US vs BR patients. NO patients had significantly longer

OS and DFS ($p < 0.001$). R0 patients had significantly longer OS ($p = 0.03$) and longer DFS ($P = 0.08$). In the multivariate analysis, the presence of postoperative pancreatic fistula, R1 resection, N+ and not access to adjuvant chemotherapy were bad prognostic factors of OS.

Conclusions: Our study suggests the benefits of NAC for BR patients in downstaging tumors and rendering them amenable to resection, with same oncological result compared to US.

KEYWORDS

borderline pancreatic cancer, neoadjuvant chemotherapy, downstaging treatment, pancreatic surgery outcomes, FOLFIRINOX regimen

Introduction

Pancreatic cancer (PC) is one of the most aggressive solid tumor entities and the fourth leading cause of cancer-related mortality in western countries. It is projected to become the second leading cause of cancer-related death in 2030 (1). Pancreatic ductal adenocarcinoma (PDAC) is the most common histological subtype (>85%) of pancreatic neoplasms. Surgery is the only potential curative treatment of PDAC but, unfortunately, only 20% of patients are eligible for such treatment (2). Indeed, after staging, PDAC is classified into resectable, borderline resectable (BR), locally advanced (LA), or metastatic diseases. Resectable disease is anatomically defined as having the following criteria (i) absence of extra pancreatic disease; (ii) no involvement of the superior mesenteric artery (SMA), hepatic artery, and coeliac axis; and (iii) patency of the superior mesenteric vein (SMV)/portal vein (PV) confluence. Beyond resectable criteria, tumors might remain technically resectable, but surgery carries higher risk of positive margins (R1) with also a higher risk of post-operative complications. Surgery is more challenging and requires frequently associated vascular resection. This might compromise adjuvant treatments and, thus, put patients at a higher risk of recurrence (3). In fact, survival in such patients remains very low, even for those who achieve R0 resection. It is estimated that the 5-year survival rates can hardly reach 20% with more than 80% distant metastatic disease risk (2). Complementary adjuvant treatments are often associated to achieve better OS and DFS (4). Unfortunately, up to 25% of patients with resectable tumors are unable to receive post-operative therapy due to frequent morbidity of pancreaticoduodenectomy and prolonged recovery (5).

These clinical observations suggest that upfront surgery (US) may not be the optimal strategy for BR PDAC. Neoadjuvant chemotherapy (NAC) for BR is becoming the trend in most specialized centers. This strategy has several objectives, (i) the

possibility of downstaging the tumoral load to achieve higher rates of R0 resection and (ii) improving the selection of surgical candidates as patients with progressive disease refractory to chemotherapy will not be suitable for pancreatotomy.

Since multiple studies showed encouraging results in metastatic disease with regimens such as FOLFIRINOX (6) and gemcitabine/Nab-paclitaxel (6), many centers extrapolated these results and incorporated these regimens in the pre-operative setting for advanced tumors (7, 8). One study even managed to prove the effectiveness and cost-effectiveness of induction FOLFIRINOX regimen in patients with resectable PDAC (2).

The aim of our study was to retrospectively evaluate the outcome of patients with US-PDAC and BR-PDAC, resected after NAC, and to determine prognostic factors that might affect the outcome in these resected patients.

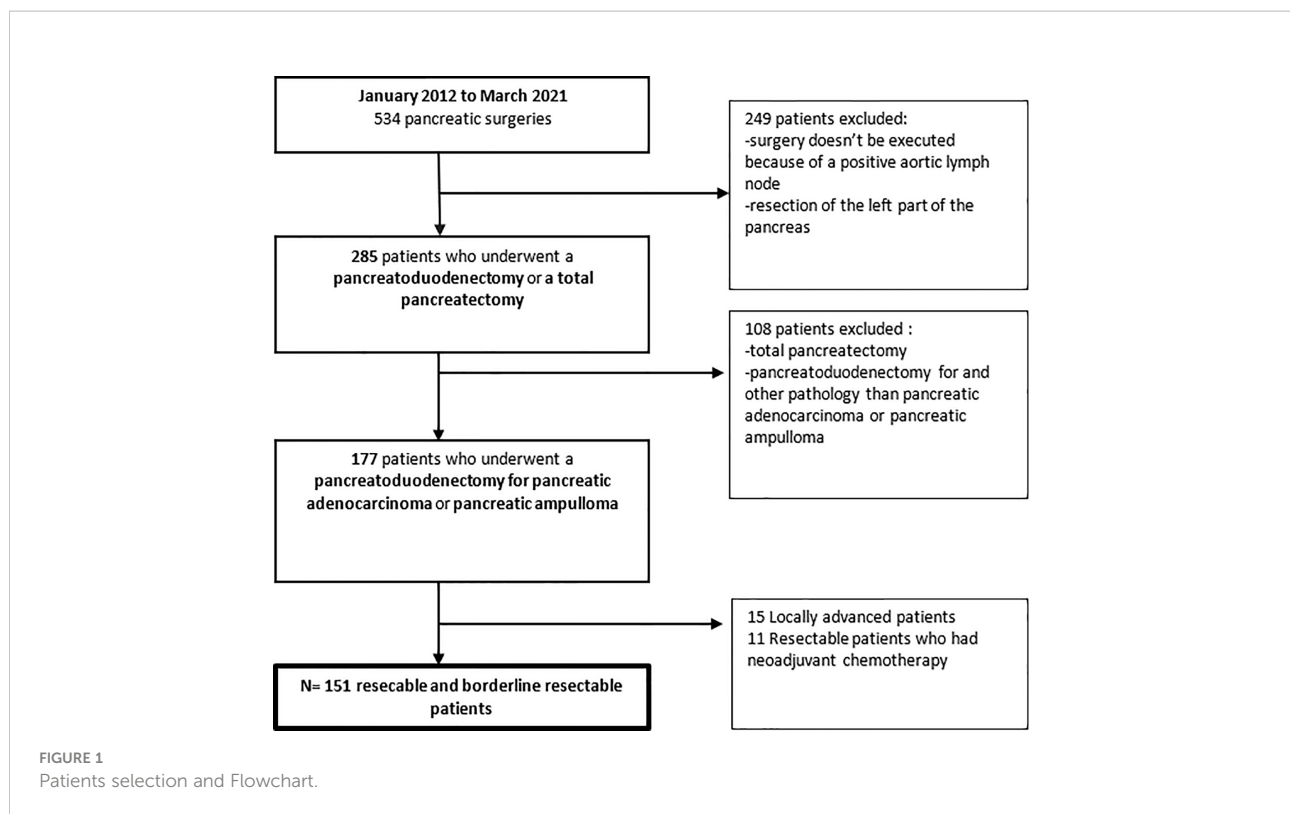
Methods

Study design

After the institutional review board approval, all US- and BR-patients at Robert Debre University Hospital between January 2012 and March 2021 were retrospectively identified from institutional databases. Among them, 151 patients were finally selected, 113 US, and 38 patients BR-PDAC who underwent surgery after induction chemotherapy (Flow chart—Figure 1).

Inclusion patients

All patients with PDAC were discussed during our institutional multidisciplinary oncological meeting (MOM). The MD Anderson Cancer Centre (MDACC) classification was used for staging (9). BR patients were referred to pre-



operative chemotherapy. Post-chemotherapy reassessment was performed using triple-phase computed tomography (CT) scan and magnetic resonance imaging (MRI) with diffusion-weighted phase. Pancreatectomy was considered in the patients with no newly developed metastases on less than 4 weeks imaging before surgery and who did not experience obvious tumoral locoregional growth.

Induction chemotherapy

For BR-PDAC, different protocols upon comorbidity were used: (i) modified FOLFIRINOX regimen consisted of oxaliplatin (85 mg per square meter of body-surface area), irinotecan (180 mg per square meter, reduced to 150 mg per square meter after a protocol-specified safety analysis), leucovorin (400 mg per square meter), and fluorouracil (2400 mg per square meter) every 2 weeks; (ii) FOLFOX regimen consisted of oxaliplatin (85 mg per square meter of body-surface area), leucovorin (400 mg per square meter), and fluorouracil (2400 mg per square meter) every 2 weeks; (iii) GEMOX regimen consisted of gemcitabine (850 mg square meter for dose on day 1 and day 8) and oxaliplatin (100 mg square meter for dose on day 2) every 21 days. Patients were monitored for adverse effects and managed mainly in the outpatient clinic.

Surgery and histopathological evaluation

During laparotomy, once the presence of hepatic metastases and peritoneal carcinomatosis were excluded, harvesting of aorto-caval lymph nodes (LN station 16) was performed. Then, pancreaticoduodenectomy was performed either with the posterior approach or the artery first technique as described by Pessaux et al. (10). Pancreatico-jejunal anastomosis was performed in duct-to-mucosa technique with a stent left in place. Lymphadenectomy was done based on recommendations of the ISGPS (11). All operative sites were drained mostly by unique right-side drains. Pancreatic and bile duct margins were sent for frozen section and re-resection was performed in case invaded margins. On the specimen, the retroportal lamina was inked to identify the posterior margins. All surgeries were performed by an expert pancreatic surgeon (TP or RK). In our study, we do not separate open pancreatectomy to mini-invasive pancreatectomy, because in the mini-invasive approach, we follow all the steps of open approach, as previously reported (12). Histopathological analysis was performed according to current international TNM classification at the time of resection. We stratified margins into R0 or absence of tumoral contact (margin > 1 mm) and R1 or microscopical tumoral contact (margin ≤ 1 mm) (8). As post-operative complications, we evaluated only the post-operative

pancreatic fistula (POPF, grade B or C) (13), delayed gastric emptying (DGE, grade B or C) (14), and post-pancreatectomy hemorrhage (PPH, grade B or C), according to International Study Group of Pancreatic Surgery (ISGPS).

Follow up

In line with institutional guidelines, all patients are followed after surgery with biological tumoral markers (CA 19.9) and radiological examination (CT scan) every 3 months for the first 2 years and every 6 months thereafter.

Statistical analysis

For the descriptive analysis, the quantitative variables were expressed as mean and standard deviation; the qualitative variables as numbers and percentages. The Student's *t* test was used to compare the quantitative characteristics and the chi-square test for categorical characteristics. The variables were dichotomized, when possible, to facilitate the comparisons. When the Student's *t* test could not be used because the variances were not homogeneous, the Mann–Whitney test was applied. When the chi-square test was not valid because the number was lower than 5, the Fisher's exact test was used. Survival analysis was performed using the Kaplan–Meier and log-rank test method for the endpoints. The variables entered in the Cox model and regression model were those with a univariate *p* value < 0.20 or clinical significance. The results were expressed as hazard ratio with 95% confidence intervals for the Cox model, and odds ratio with 95% confidence intervals for the logistic regression model. A *p* value less than 0.05 was considered statistically significant. Statistical analyses were performed using SPSS20.0 (SPSS, Inc., Chicago, IL, USA).

Ethical considerations

The study design (from retrospective observation) was based on a medical database that did not require patient consent, according to French legislation (15). This study was performed in compliance with national legislation regarding epidemiological studies (Declaration No2206749 v 0). Moreover, in accordance with national ethical directives, the requirement for written informed consent was waived because the study was strictly observational and all data were blinded (16). According to the French Public Health Code, this research also did not require an ethical committee. Patients were informed that the study was being carried out *via* the hospital's registry of ongoing studies.

Results

Between January 2012 and March 2021, 177 patients underwent duodenopancreatectomy for PDAC. Of those 113 patients who had US for resectable disease, 38 patients had surgery for BR disease after induction chemotherapy (see flowchart—Figure 1).

Patients' data at diagnosis

Patients' data at diagnosis are summarized in Table 1. Baseline characteristics [age, sex, body mass index (BMI), comorbidity, and American society of anesthesiologists (ASA) score] were statistically similar and they are shown in Table 1. Pre-operative biliary drainage and CA 19.9 value were statistically similar and they are shown in Table 2. All patients had a PDAC localized in the head of the pancreas or in the uncus

TABLE 1 Baseline population characteristics.

	All patients (n = 151)	Upfront surgery (n = 113)	Borderline (n = 38)	p-value*
Women	85	61 (54%)	24 (63.2%)	0.351
Men	66	52 (46%)	14 (36.8%)	0.351
Age at surgery (mean)	67	67	66	0.607
Mean BMI (kg/m ²)	24.8	24.9	23.8	0.089
Diabetes	39 (25.8%)	33 (29.2%)	6 (15.8%)	0.134
BMI > 35 kg/m ²	7 (4.6%)	6 (5.3%)	1 (2.6%)	0.680
High blood pressure	64 (42.4%)	49 (43.4%)	15 (39.5%)	0.708
Weaned or active smoking	57 (37.7%)	42 (37.2%)	15 (39.5%)	0.431
ASA I	19 (12.6%)	16 (14.2%)	3 (7.9%)	0.4
ASA II	70 (46.4%)	51 (45.1%)	19 (50%)	1
ASA III	46 (30.5%)	32 (28.3%)	14 (36.8%)	0.538
ASA IV	1 (0.7%)	1 (0.9%)	0	1

*Comparison between the Upfront Surgery and the Borderline.

TABLE 2 Neoadjuvant data.

	All patients (n = 151)	Upfront surgery (n = 113)	Borderline (n = 38)	p-value*
Tumor size (mean) (mm)	25.2	23.7	29.3	0
Biliary drainage	97 (64.2%)	71 (62.8%)	26 (68.4%)	0.564
Endoscopic drainage	89 (58.9%)	67 (59.3%)	22 (57.9%)	1
Biliary prosthesis	85 (56.3%)	61 (54%)	24 (63.2%)	0.351
CA19.9 <37 U/ml	32 (21.2%)	24 (21.2%)	3 (21.1%)	0.308
CA19-9 (median and extremes)	103 (0.8-19648)	103 (0.8-19648)	83 (2.1-12000)	
Neoadjuvant chemotherapy	38 (25.2%)	0	38 (100%)	0
FOLFIRINOX**	35 (23.2%)	0	35 (92.1%)	
GEMOX	3 (2%)	0	3 (7.9%)	

*Comparison between the Upfront Surgery and the Borderline group.

**Three patients changed for FOLFOX because of a bad tolerance.

or in the peri-ampullary tissue. Mean tumor diameter was 29.3 mm for BR-PDAC patients vs. 23.7 mm for US patients (Table 2).

Chemotherapy data

BR-PDAC patients' data following chemotherapy are shown in Table 2. Induction chemotherapy alone with no radiotherapy. All BR-PDAC patients received pre-operative chemotherapy, 92.1% (n=35) FOLFIRINOX regimen, and 7.9% (n=3) GEMOX regimen (Table 2). In addition, 3 patients (8.5%) experienced severe side effects of irinotecan with FOLFIRINOX and were switched to FOLFOX. Moreover, 32 patients (91.5%) who completed neoadjuvant therapy tolerated their treatment without hospital admission or emergency department care. The median duration of neoadjuvant treatment was 2.1 months, with an average of 5.2 cures per patient. The mean reduction in tumor size was 28.7%, from a median size of 30 mm to 20 mm (Table 3). Surgical exploration was performed 5–6 weeks following chemotherapy completion. The 78.8% of patients (119) received an adjuvant chemotherapy regimen. Table 5 summarizes the data of the different protocols used. Often, a different protocol was used due to toxicity problems or a

compromised performance status. The median duration of adjuvant chemotherapy was 5.1 months, with an average of 6.8 cures per patient.

Post-operative data

The rate of venous resections was significant higher in the BR patients than in the US patients (52.6% vs. 23%, p=0.001) (Table 4).

Histopathological and post-operative data are summarized in Table 4. Resection quality rate showed 71.5% R0 and 28.5% R1. Concerning tumor size, T3 rate was significantly higher in the US than BR (58.4% vs. 34.2%, p= 0.005). Lymphadenectomy resulted in mean of 19.6 lymph node per procedure with a positive rate of 70.8% and an average of two involved LN per patient in the BR-PDAC, vs. 63.2% and one involved LN in US patients. Comparisons between POPF, PPH, and DGE rates were not significant in two groups (Table 5). As expected, POPF rate was 11.5% in the US patients vs. 5.3% in the chemo-induced patients. Moreover, 15 patients had POPF during the post-operative period. All these patients received post-operative Somatostatin analogues for at least 7 days. Among the four

TABLE 3 After neoadjuvant chemotherapy data.

Borderline n = 38	Before neoadjuvant chemotherapy	After neoadjuvant chemotherapy
Tumor size (mean) (mm)	29.2***	19.9****
Tumor size (median and extremes) (mm)	30 (15-50)	21 (0-40)
Regression (mean) (mm)		8.5
Regression (median and extremes) (mm)		6 (0-25)
Percentage of regression (mean)		29.9%
CA19.9 < 37 U/ml	7 (18.4%) *	11 (28.9%) **
CA19.9 (mean)	1072.2*	241.7**
CA19-9 (median and extremes)	83 (2.1-12000) *	36 (2.1-2101.6)

*5 missing data, ** 5 missing data, *** 2 missing data, **** 3 missing data.

TABLE 4 Pathological data on post-resection specimens.

	All resected patients (n = 151)	Upfront surgery resected (n = 113)	Borderline resected after NAC (n = 38)	p-value*
Venous resection	46 (30.5%)	26 (23%)	20 (52.6%)	0.001
Tumor size (mean) (mm)	26.3	27.2	23.5	0.143
R0 >1 mm	108 (71.5%)	86 (76.1%)	22 (57.9%)	0.039
R1	43 (28.5%)	27 (23.9%)	16 (42.1%)	0.039
T0	1 (0.7%)	0	1 (2.6%)	0.441
T1	19 (12.6%)	11 (9.7%)	8 (21.1%)	0.089
T2	40 (26.5%)	25 (22.1%)	15 (39.5%)	0.054
T3	79 (52.3%)	66 (58.4%)	13 (34.2%)	0.005
T4	11 (7.3%)	9 (8%)	2 (5.3%)	0.731
N+	104 (68.9%)	80 (70.8%)	24 (63.2%)	0.687
Number of N+ (mean)	2.9	3	2.6	0.552
Collected lymph nodes (mean)	19.6	20.4	17.5	0.104
LN ratio (mean)	0.14	0.15	0.13	0.552
Venous emboli	79 (52.3%)	61 (54%)	18 (47.4%)	0.574
Perineural sheathing	108 (75.5%)	82 (72.6%)	26 (68.4%)	0.679
Lymph emboli	85 (56.3%)	67 (59.3%)	18 (47.4%)	0.257

*Comparison between the Upfront Surgery and the Borderline group.

TABLE 5 Post-operative data.

	All patients (n = 151)	Upfront surgery (n = 113)	Borderline (n = 38)	p-value*
Grade B-C pancreatic fistula	15 (9.9%)	13 (11.5%)	2 (5.3%)	0.131
Grade B-C gastroparesis	19 (12.6%)	12 (10.6%)	7 (18.4%)	0.258
Grade B-C hemorrhage	14 (9.3%)	10 (8.8%)	4 (10.5%)	0.752
D30 mortality	6 (4%)	4 (3.5%)	2 (5.3%)	0.642
D90 mortality	11 (7.3%)	7 (6.2%)	4 (10.5%)	0.272
1-year survival	113 (88.4%)	89 (78.8%)	24 (63.2%)	
3-year survival	38 (25.1%)	37 (32.7%)	8 (21.1%)	
Mean survival (month)	29.4	30.3	26.6	
Mean survival (day)	894	921	809	
6 months tumor recurrence	10 (6.6%)	7 (6.2%)	3 (8.3%)	
1-year recurrence	44 (29.1%)	35 (31%)	9 (23.6%)	
3-year recurrence	77 (60%)	57 (50.4%)	20 (52.6%)	0.851
Mean DFS (day)	495	471.5	456	
Mean DFS (month)	15.9	15.5	13.5	
Adjuvant chemotherapy	119 (78.8%)	88 (77.9%)	31 (81.6%)	0.819
FOLFIRINOX	32 (26.9%)	16 (18.1%)	16 (51.6%)	<0.001
GEMZAR + XELODA	74 (62.1%)	68 (77.2%)	6 (19.4%)	<0.001
LV5 FU2	6 (5%)	1 (1.1%)	5 (16.1%)	<0.001
FOLFOX **, ***	7 (5.9%)	3 (3.4%)	4 (12.9%)	0.053

*Comparison between the Upfront Surgery and the Borderline group.

**Patients who had neoadjuvant FOLFOX went on an adjuvant therapy with FOLFOX.

***Bad tolerance for FOLFIRINOX because of post-operative complication or bad general condition.

patients with a grade C pancreatic fistula, two died during the first 90 post-operative days due to PPH, and two needed a redo-surgery during the same hospitalization. One of the patients with a grade B pancreatic fistula died during the first 30 post-operative days due to a mesenteric ischemia.

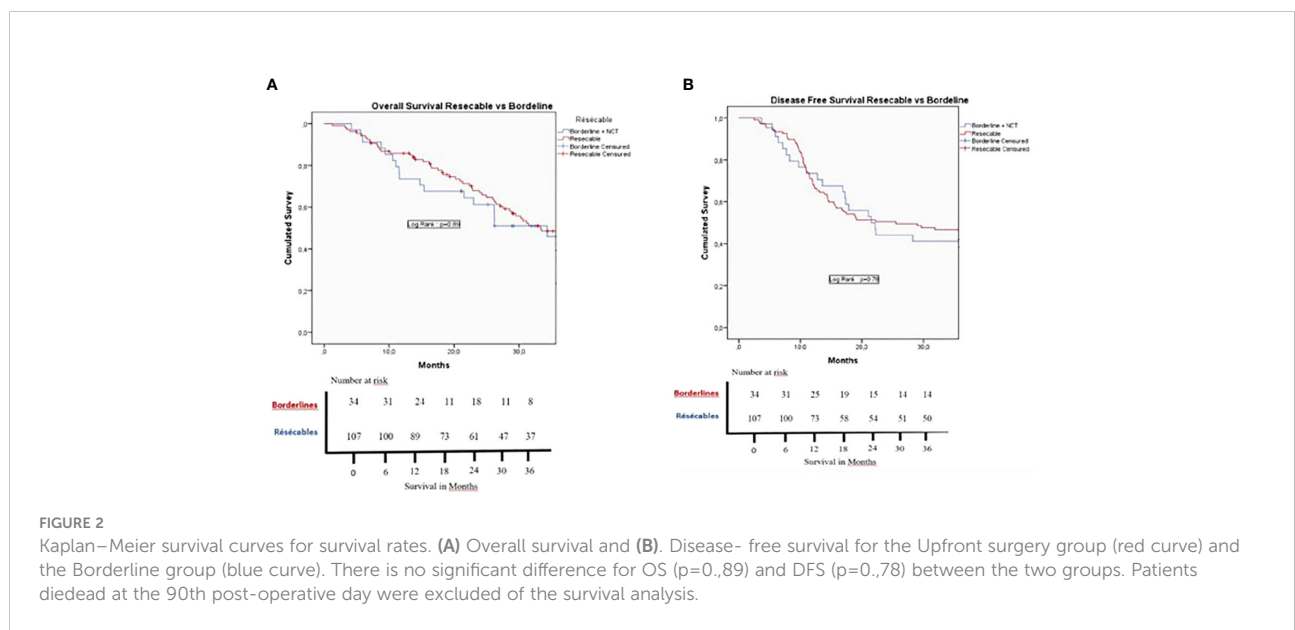
Among the patients, 19 had DGE during the post-operative period. A medical treatment was managed for all these patients in first place, with the administration of prokinetic drugs sometimes associated with a nasogastric tube. A nasojejunal tubes were necessary for three patients. One of them was reoperated at the 21st post-operative day due to an early stenosis of gastrojejunal anastomosis.

In addition, 14 patients had PPH. Two patients had a parietal bleeding that was controlled by surgical hemostasis. Two patients had a bleeding from a hemorrhagic ulcer of the gastrojejunal anastomosis. One of them received a surgical hemostasis, and in the other the bleeding was spontaneously interrupted. A portal vein bleeding was the cause of the death for two patients, despite redo-surgery for hemostasis. Two patients had a bleeding from the superior mesenteric artery, treated by radiological embolization followed by surgical hemostasis, in one of them. Bleeding came from fissure of proper hepatic artery pseudoaneurysm in two patients, and radiological embolization and stenting were performed in both patients, the post-procedure outcome for one of them was fatal. Three patients with sentinel bleeding, without cause, detected to arteriography. The last patient had a bleeding from a branch of superior mesenteric artery treated by radiological embolization. In the cohort patients, six patients died in the first 30 post-operative days and a total 11 patients died during the first 90 post-operative days. Mortality was for the first 30 post-operative days, four (3.5%) in the US patients vs. two (5.3%) in the BR groups (p=0.64). For the first 90 post-operative days, seven

(6,2%) in the US patients vs. four (10.5%) in the BR groups (p=0.27). Among the six patients who died within the first 30 post-operative days, one died due to a pulmonary embolism, two patients died because of a hemorrhagic shock, one of multiple organ failure after a PPH, one had a several cardiac arrest, and one died of a mesenteric ischemia. Among the five other patients who died within the first 90 post-operative days, two died because of a mesenteric ischemia, two died because of multiple organ failure after a PPH. For one of these patients, the reason of the death is unknown.

Survival and recurrence

In the cohort population, 78.8% of patients received adjuvant CHT, 77.9% in the US vs. 81.6% in the BR patients (p=0.82). As shown in Table 5, the global mean post-operative OS was 29.4 months, whereas median post-operative DFS was 15.9 months. Figure 2 shows no statistically significant difference in OS between US and BR patients. BR patients vs. US patients 1 and 3 years OS were not statistically significant, 73.5% and 23% vs. 85.8% and 23.6%, respectively. This was also not significant for 1 and 3 years DFS, 73.5% and 38.2% vs. 68.2% and 42.1% for BR patients vs. US patients (p=0.89), respectively. No statistically significant difference OS and DFS was evidenced in the US group based on the value of Ca19.9 considering a cutoff of 120 U/ml (p=0.76 in OS and P=0.26 in DFS) or 500 U/ml (p=0.62 in OS and p=0.96 in DFS). Figure 3 shows the results according to the nodal invasion (N0 vs N+). A statistically significant difference in OS was observed after 1 and 3 years in OS for N0 versus N+ patients, 88.5% and 58.4% vs. 80.3% and 32.4% (p=0<001). For the 1 and 3 years DFS, a statistically significant difference was observed, 86.4% and 61.4% vs. 61.9% and 32% between N0 vs. N+



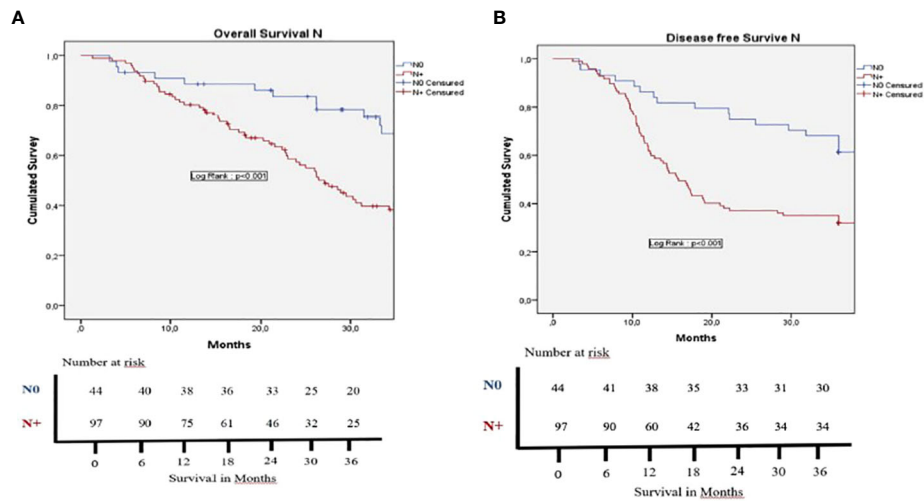


FIGURE 3 Kaplan-Meier survival curves for survival rates. **(A)** Overall survival and **(B)** Disease free survival for the N+ (positive collected lymph nodes at the pathology analysis) group (red curve) and the N0 (no positive collected lymph node at the pathology analysis) group (blue curve). There is a significant difference for OS ($p < 0,001$) and DFS ($p < 0,001$) between the two groups. Patients dead at the 90th post-operative day were excluded of the survival analysis.

patients ($p < 0.001$). In **Figure 4**, the outcome according to the status of margin invasion (R0 vs. R1) is shown. A statistically significant difference in OS at 1 and 3 years was observed between R0 and R1 patients, 86.8% and 46.4% vs 73.2% and 29% ($p = 0.03$). However, no statistically significant difference was observed in

DFS at 1 and 3 years between R0 and R1 patients, 70% and 46% vs 68.3% and 29.3% ($p = 0.08$). When we stratify all the variable that can influenced the OS and DFS in the cohort population, we found that in the multivariate analysis that POPF, R1, N+ and not access to adjuvant chemotherapy were bad prognostic factors of

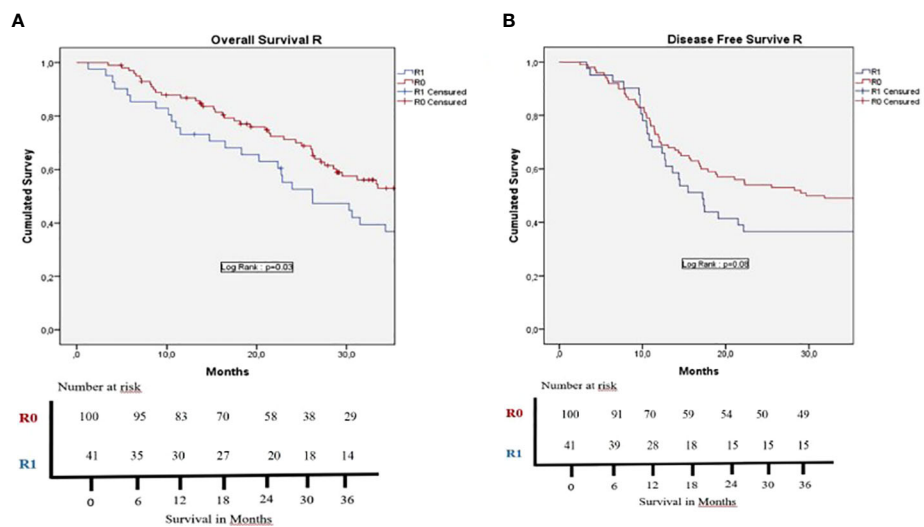


FIGURE 4 Kaplan-Meier survival curves for survival rates. **(A)** Overall survival and **(B)** Disease free survival for the R0 (resection margin $> 1\text{mm}$ at the pathology analysis) group (red curve) and the R1 (resection margin $< 1\text{mm}$ at the pathology analysis) group (blue curve). There is a significant difference for OS ($p = 0,03$) and no significant difference for DFS ($p = 0,08$) between the two groups. Patients dead at the 90th post-operative day were excluded of the survival analysis.

OS (Table 6); and we found that PPH, N+ were bad prognostic factors of DFS (Table 7).

Discussion

Our study showed that mean OS and DFS in BR patients after NAC and in the US patients were 26.6 and 13.5 months vs. 30.3 and 15.5 months, respectively. In the BR patients, the tumor diameter dropped after pre-operative chemotherapy significantly, with a mean percentage of regression of 29.9%. No evidence of tumor was seen on the control CT scan for five patients. In the two groups, the rate of post-operative pT3 tumors was significantly higher in the US patients ($p=0.005$), while after NAC, BR patients, who were initially in more advanced tumor status, had a similar OS and DFS of US patients at 1–3 years ($p=0.89$ and $p=0.78$). In our cohort, according to nodal status, the patients had a significant better OS and DFS when they did not have a nodal infiltration by the tumor (N+) ($p<0.001$). Equally, according to margin status,

the patients had a significant better OS when there was a microscopic tumoral invasion of the margin ($p=0.03$) and a non-significant better DFS when there was a microscopic tumoral invasion of the margin ($p=0.08$).

Most of the patients with PDAC present with locally advanced or metastatic disease, in fact only 15%–20% present with upfront resectable disease. To date, the only potentially curative therapy for PDAC remains surgical resection. NAC is increasingly used to target occult disease if present, select patients, and possibly downstage tumors.

Induction chemotherapy for borderline tumors is acquired but it is place for resectable borderline. PDAC is not standardized and its role is not well definite for the different results reported by the literature (17–19).

Most of the patients in our study were highly selected, most had good performance status ($\text{OMS} \leq 2$), with no contraindications to NAC, especially vascular anatomical abnormalities for subsequent major pancreatic surgery, and BR patients received pre-operative induction chemotherapy mainly FOLFIRINOX regimen (84.2% of

TABLE 6 Univariate and multivariate Cox-regression analysis of the overall survival with Borderline group and Upfront surgerygroup.

Variable	Cohort	Univariate <i>p</i> value	Multivariate HR	95% CI	<i>P</i> value
Women	85	0.562			
Biliary drainage	97				
Endoscopic drainage	89				
Biliary prosthesis	85				
ASA1	19				
ASA 2	70				
ASA3	46				
High Blood Pressure	64				
Diabetes	39				
Weaned or active smoking	51				
BMI >35kg/m ²	7				
Ca 19.9 < 37 U/ml	32				
Neoadjuvant chemotherapy	35				
B-C pancreatic fistula	25	0.048	3.746	1.073-13.086	0.038
B-C hemorrhage	14	0.269	3.170	0.318-31.565	0.325
B-C Gastroparesis	19				
R1	43	0.036	2.716	1.268-5.818	0.010
Positive collected lymph nodes	104	0.036	2.695	1.068-6.797	0.036
Venous emboli	79	0.238			
Perineural sheathing	108	0.466			
Lymph emboli	85	0.300	0.712	0.363-1.4	0.325
T1	19	0.005			
T2	40	0.016			
T3	79	0.011			
T4	11	0.114			
Venous resection	46	0.121	0.478	0.201-1.136	0.095
Adjuvant chemotherapy	119	0.045	3.485	1.226-9.904	0.019

TABLE 7 Univariate and multivariate Cox-regression analysis of the recurrence with Borderline group and Upfront surgery group.

Variable	Cohort	Univariate <i>p</i> value	Multivariate HR	95% CI	<i>P</i> value
Men	66	0.508			
Women	85	0.508			
Biliary drainage	97	0.393			
Endoscopic drainage	89	0.317			
Biliary prosthesis	85	0.139			
ASA1	19	0.323			
ASA 2	70	0.299			
ASA3	46	0.071			
High Blood Pressure	64	1			
Diabetes	39	0.455			
Weaned or active smoking	51	0.862			
BMI >35 kg/m ²	7	0.699			
Ca 19.9 < 37 U/ml	32				
Neoadjuvant chemotherapy	35	0.846			
B-C pancreatic fistula	25	0.787			
B-C hemorrhage	14	0.009	3.29	1.014-10.67	0.047
B-C Gastroparesis	19	0.329			
R1	43	0.106			
Positive collected lymph nodes	104	0.002	0.395	0.223-0.7	0.001
Venous emboli	79	0.194			
Perineural sheathing	108	0.003	0.613	0.346-1.086	0.094
Lymph emboli	85	0.250			
T1	19	0.006	1.604	0.593-4.341	0.352
T2	40	0.353			
T3	79	0.002	0.783	0.482-1.273	0.324
T4	11	0.532			
Venous resection	46	0.477			
Adjuvant chemotherapy	119	0.001	1.226	0.612-2.458	0.565

patients). Despite its high toxicity profile often necessitating dose re-adjustments or change of regimen in frail patients; FOLFIRINOX has proven superiority over other regimens in many studies, mainly the ACCORD trial that showed prolonged survival with minimal impairment in quality of life in well-selected patients (6). In the borderline group, only the 52.6% of patients received vascular resection. This point was marked during the latest international consensus, given that the major determinants of resectability in PDAC remain anatomical findings on imaging (mainly size and vessel involvement), biologic behavior of the tumor (Ca 19-9), and the patient's characteristics (OMS and comorbidities) (20). By carefully selecting patients, our study showed how NAC succeeded in downstaging tumors and affecting biological behavior, while preserving a good performance status

allowing patients to undergo a highly morbid surgical procedure like a pancreaticoduodenectomy.

In order to study the effect of NAC on survival, follow up was continued post-operatively, from the histopathologic study of surgical specimens to the surgical morbidity and mortality. Patients were then followed with markers and imaging every 3 months for 2 years post-operatively and every 6 months thereafter.

In our series, even if in the borderline group, the tendency is to have fewer pancreatic fistulas; there is no significant difference compared to the US (5.3% vs. 11.5%). This is mainly due to a lack of statistical power, but the tendency is clearly towards fewer POPF after neoadjuvant treatment. In the literature, the results are conflicting. Cools et al.'s data using the ACS-NSQIP-targeted pancreatotomy from 2014–2015 showed a statistically significant

difference in terms of Type C pancreatic fistula between patients that received NAT and US patients (21). Denbo et al. considering all types of pancreatectomy (Whipple et. DP), no difference was found between patients that received NAT and US patients ($P = 0.96$) (22). Extremely interesting are the results of the study by Marchegiani et al. that reports the experience of the Verona team. In fact, NAT significantly reduces the incidence of pancreatic fistula ($P = 0.05$), but based on the Modified Accordion Severity Grading System and average complication burden (ACB) used to compare the patients treated with NAT with the patients who underwent US, the results show that the patients who develop a fistula post-NAT are associated with an increase in clinical burden (23–27). These results introduce, in our opinion, an aspect that is often overlooked, the toxicity of chemotherapy. The toxicity of FOLFIRINOX grade 3/4/5 can reach up to 50% (ASCO 2022). This often results in surgical management of fragile patients who may have a more complicated post-operative course. Although NAT allows us to operate on patients with a “hard” pancreas and better selected (exclude patients who develop metastases during chemotherapy), on the other hand, the pre-operative management requires multidisciplinary management.

This aspect of patient fragility also results in difficult access to adjuvant chemotherapy. As we have well shown in our results, among the OS risk factors, pancreatic fistula and lack of access to adjuvant chemotherapy are themselves negative risk factors.

Since multiple series showed that radical surgical resection with negative margins is the key to achieve better survival, margins were noted in all specimens, especially the retroperitoneal margin. A minimum of 1-mm margin has been adopted by the current Royal College of Pathologists’ guidelines for pancreatoduodenectomy specimens (28). In fact, many studies showed that the survival benefit of negative margin was lost when the tumor was within 1 mm of the resection margin ($R1 < 1$ mm). Our study showed an R0 resection in 76.1% of US patients vs. 63.2% of BR patients, R1 (margin inferior to 1 mm) in 11.5% of US patients vs. 15.7% of BR patients and R1 (microscopical contact with the tumor, margin 0 mm) in 12.4% of US vs. 21.1% of BR patients. In pancreatic surgery, R0 resection is generally reported to be achieved in 70%–80% of cases, but, unfortunately, the definition of R0 resection is not yet worldwide standardized. When 1-mm margin was used, R0 resection rate dropped to 5%–26% (29–33). A meta-analysis of 19 studies by Chandrasegaram et al. found that the rate of R0 resection with a 0-mm margin was 72%, while that with a 1-mm margin was 41% (34). Yamamoto et al. noted a drop in R0 resections after the revised classification from 84% to 43% (35). Chang et al. reported on 365 patients, 46% of whom were resected with a margin wider than 1.5 mm. Patients with a margin wider than 1.5 mm were actual long-term survivors, as compared to a margin of less than 1.5 mm (36). In our series, in the 76.1% and 63.1% of resected patients (US and BR patients), the resection margin was ≥ 1 mm. One of the reasons that can explain high rate of R0 resections was likely

achieved due to the artery first approach, common in our technique. As described by Pessaux et al., resection starts by isolating the mesenteric artery at the origin and along its upper/right border in contact with the adventitia allowing us to dissect the artery up to the last fat cell and thus gaining margins (10).

The aim of our study was to assess the effect of NAC on BR pancreatic tumors compared to the patients that received US and how these changes might affect OS and DFS. As expected, a significant effect on tumor size were observed in histopathological post-operative analysis: higher T3 rate was found in the US patients, despite a mean lower size of the tumor shown on pre-operative CT scan. Our study did not show any significant difference, concerning OS and DFS between two groups. In our series, patients with R1 resection had worse OS than patients with R0 resection ($p=0.03$). At the same time, N+ patients had a worse OS and DFS at 1–3 years when compared to N0 patients ($p<0.001$ respectively), the points that are largely admitted in the literature and recently by Netherlands studied showing the effect of margin and lymph node status in all pancreatectomies for cancer (37).

In our study, we analyze prognostic factor that can have an impact on OS such as presence of POPF, R1 margin, presence of nodal tumoral invasion (N+), and absence of adjuvant chemotherapy as being bad prognostic factors at multivariate analysis. Bilici et al. showed that median survival time was better in R0-resected patients when compared with R1-resected patients (22 months vs. 15 months) (38). Li et al. analyzed retrospectively prognostic factor that impacted OS and showed that R1 and N+ were important prognostic factors for OS after pancreatic resection. Moreover, the authors found a statistical difference in OS for the patients that have POPF ($p<0.05$) (39). In the study of Girgis et al., multivariate analysis predicting overall survival, the absence of adjuvant chemotherapy negatively impacted the OS ($P < 0.001$) (40). Recently, Strobel et al. reviewed all patients undergoing upfront resection for resectable and borderline-resectable PDAC between 2001 and 2011. The extent of lymph node involvement was the strongest predictor of 5 years OS. Patients with pN0R0 had a 5-year OS rate of 38.2% (41); in our experience, patient with pN0R0 had a 3-year OS rate of 70%.

Our study had several limits. The retrospective design from one center, and limited number of included patients especially for BR-disease. No intention-to-treat analysis was performed. The previous results might suggest the benefit from such strategy in highly selected patients. We also admit the presence of few missing data that we were not able to retrieve and that may alter the interpretation of the result.

In conclusion, the present study confirms the favorable outcomes of radical pancreatectomy for BR-patients after NAC. This seems to allow significant downstaging of BR-patients both in tumors size and LN with similar 1 and 3 years OS and DFS when compared to US patients. In the lack of prospective randomized trials, our policy is to propose US for resectable and routine NAC for BR tumors. The artery-first technique seems to help achieving better R0 margin rates.

Data availability statement

The raw data supporting the conclusions of this article will be made available by the authors, without undue reservation.

Author contributions

VF and AM are 2 first co-authors because they have contributed in same manner to the development of work. (I). Conception and design: TP, AM, RR, VF, RK (II). Administrative support: AM, VF, LR, MBa (III). Provision of study materials or patients: TP, OB, RK (IV). Collection and assembly of data: AM, RR, VF, LR, MBa (V). Data analysis and interpretation: AM, RR, TP, SS, OB, RK (VI). Manuscript writing: All authors (VII). All authors contributed to the article and approved the submitted version.

References

- Hackert T. Surgery for pancreatic cancer after neoadjuvant treatment. *Ann Gastroenterol Surg* (2018) 2:413–8. doi: 10.1002/ags3.12203
- Choi JG, Nipp RD, Tramontano A, Ali A, Zhan T, Pandharipande P, et al. Neoadjuvant FOLFIRINOX for patients with borderline resectable or locally advanced pancreatic cancer: Results of a decision analysis. *Oncologist* (2018) 23:1–10. doi: 10.1634/theoncologist.2018-0114
- McClaine RJ, Lowy AM, Sussman JJ, Schmulewitz N, Grisell DL, Ahmad SA. Neoadjuvant therapy may lead to successful surgical resection and improved survival in patients with borderline resectable pancreatic cancer. *HPB (Oxford)* (2010) 12:73–9. doi: 10.1111/j.1477-2574.2009.00136.x
- Kang CM, Chung YE, Park JY, Sung JS, Hwang HK, Choi HJ, et al. Potential contribution of preoperative neoadjuvant concurrent chemoradiation therapy on margin-negative resection in borderline resectable pancreatic cancer. *J Gastrointest Surg* (2012) 16:509–17. doi: 10.1007/s11605-011-1784-3
- Lopez NE, Prendergast C, Lowy AM. Borderline resectable pancreatic cancer: definitions and management. *World J Gastroenterol* (2014) 20:10740–51. doi: 10.3748/wjg.v20.i31.10740
- Conroy T, Desseigne F, Ychou M, Bouche O, Guimbaud R, Becouarn Y, et al. FOLFIRINOX versus gemcitabine for metastatic pancreatic cancer. *N Engl J Med* (2011) 364:1817–25. doi: 10.1056/NEJMoa111923
- Faris JE, Blaszkowsky LS, McDermott S, Guimaraes AR, Szymonifka J, Huynh MA, et al. FOLFIRINOX in locally advanced pancreatic cancer: The Massachusetts general hospital cancer center experience. *Oncologist* (2013) 18:543–8. doi: 10.1634/theoncologist.2012-0435
- Kim SS, Nakakura EK, Wang ZJ, Kim GE, Corvera CU, Harris HW, et al. Preoperative FOLFIRINOX for borderline resectable pancreatic cancer: Is radiation necessary in the modern era of chemotherapy? *J Surg Oncol* (2016) 114:587–96. doi: 10.1002/jso.24375
- Katz MH, Pisters PW, Evans DB, Sun CC, Lee JE, Fleming JB, et al. Borderline resectable pancreatic cancer: The importance of this emerging stage of disease. *J Am Coll Surg* (2008) 206:833–846; discussion 846–838. doi: 10.1016/j.jamcollsurg.2007.12.020
- Pessaux P, Rosso E, Panaro F, Marzano E, Oussoultzoglou E, Bachellier P, et al. Preliminary experience with the hanging maneuver for pancreaticoduodenectomy. *Eur J Surg Oncol* (2009) 35:1006–10. doi: 10.1016/j.ejso.2009.04.009
- Tol JA, Gouma DJ, Bassi C, Dervenis C, Montorsi M, Adham M, et al. Definition of a standard lymphadenectomy in surgery for pancreatic ductal adenocarcinoma: a consensus statement by the international study group on pancreatic surgery (ISGPS). *Surgery* (2014) 156:591–600. doi: 10.1016/j.surg.2014.06.016
- Al-Sadairi AR, Mimmo A, Rhaïem R, Esposito F, Rached LJ, Tashkandi A, et al. Laparoscopic hybrid pancreaticoduodenectomy: Initial single center experience. *Ann Hepatobiliary Pancreat Surg* (2021) 25:102–11. doi: 10.14701/ahbs.2021.25.1.102
- Bassi C, Marchegiani G, Dervenis C, Sarr M, Abu Hilal M, Adham M, et al. The 2016 update of the international study group (ISGPS) definition and grading of postoperative pancreatic fistula: 11 years after. *Surgery* (2017) 161:584–91. doi: 10.1016/j.surg.2016.11.014
- Wente MN, Bassi C, Dervenis C, Fingerhut A, Gouma DJ, Izbicki JR, et al. Delayed gastric emptying (DGE) after pancreatic surgery: A suggested definition by the international study group of pancreatic surgery (ISGPS). *Surgery* (2007) 142:761–8. doi: 10.1016/j.surg.2007.05.005
- Toulouse E, Lafont B, Granier S, McGurk G, Bazin JE. French Legal approach to patient consent in clinical research. *Anaesth Crit Care Pain Med* (2020) 39:883–5. doi: 10.1016/j.accpm.2020.10.012
- Légifrance. *Article R1121-2 du code de la santé publique*. (2021).
- Chawla A, Molina G, Pak LM, Rosenthal M, Mancias JD, Clancy TE, et al. Neoadjuvant therapy is associated with improved survival in borderline-resectable pancreatic cancer. *Ann Surg Oncol* (2020) 27:1191–200. doi: 10.1245/s10434-019-08087-z
- Katz MH, Shi Q, Ahmad SA, Herman JM, Marsh Rde W, Collisson E, et al. Preoperative modified FOLFIRINOX treatment followed by capecitabine-based chemoradiation for borderline resectable pancreatic cancer: Alliance for clinical trials in oncology trial A021101. *JAMA Surg* (2016) 151:e161137. doi: 10.1001/jamasurg.2016.1137
- Versteijne E, van Dam JL, Suker M, Janssen QP, Groothuis K, Akkermans-Vogelaar JM, et al. Neoadjuvant chemoradiotherapy versus upfront surgery for resectable and borderline resectable pancreatic cancer: Long-term results of the Dutch randomized PREOPANC trial. *J Clin Oncol* (2022) 40:1220–30. doi: 10.1200/JCO.21.02233
- Isaji S, Mizuno S, Windsor JA, Bassi C, Fernandez-Del Castillo C, Hackert T, et al. International consensus on definition and criteria of borderline resectable pancreatic ductal adenocarcinoma 2017. *Pancreatol* (2018) 18:2–11. doi: 10.1016/j.pan.2017.11.011
- Cools KS, Sanoff HK, Kim HJ, Yeh JJ, Stitzenberg KB. Impact of neoadjuvant therapy on postoperative outcomes after pancreaticoduodenectomy. *J Surg Oncol* (2018) 118:455–62. doi: 10.1002/jso.25183
- Denbo JW, Bruno ML, Cloyd JM, Prakash L, Lee JE, Kim M, et al. Preoperative chemoradiation for pancreatic adenocarcinoma does not increase 90-day postoperative morbidity or mortality. *J Gastrointest Surg* (2016) 20:1975–85. doi: 10.1007/s11605-016-3286-9
- Marchegiani G, Andrianello S, Nessi C, Sandini M, Maggino L, Malleo G, et al. Neoadjuvant therapy versus upfront resection for pancreatic cancer: The actual spectrum and clinical burden of postoperative complications. *Ann Surg Oncol* (2018) 25:626–37. doi: 10.1245/s10434-017-6281-9
- Cho SW, Tzeng CW, Johnston WC, Cassera MA, Newell PH, Hammill CW, et al. Neoadjuvant radiation therapy and its impact on complications after pancreaticoduodenectomy for pancreatic cancer: Analysis of the American

Conflict of interest

The authors declare that the research was conducted in the absence of any commercial or financial relationships that could be construed as a potential conflict of interest.

Publisher's note

All claims expressed in this article are solely those of the authors and do not necessarily represent those of their affiliated organizations, or those of the publisher, the editors and the reviewers. Any product that may be evaluated in this article, or claim that may be made by its manufacturer, is not guaranteed or endorsed by the publisher.

college of surgeons national surgical quality improvement program (ACS-NSQIP). *HPB (Oxford)* (2014) 16:350–6. doi: 10.1111/hpb.12141

25. Cooper AB, Parmar AD, Riall TS, Hall BL, Katz MH, Aloia TA, et al. Does the use of neoadjuvant therapy for pancreatic adenocarcinoma increase postoperative morbidity and mortality rates? *J Gastrointest Surg* (2015) 19:80–86; discussion 86–87. doi: 10.1007/s11605-014-2620-3
26. Teng A, Lee DY, Yang CK, Rose KM, Attiyeh F. The effects of neoadjuvant chemoradiation on pancreaticoduodenectomy—the American college of surgeon's national surgical quality improvement program analysis. *J Surg Res* (2015) 196:67–73. doi: 10.1016/j.jss.2015.01.045
27. Verma V, Li J, Lin C. Neoadjuvant therapy for pancreatic cancer: Systematic review of postoperative morbidity, mortality, and complications. *Am J Clin Oncol* (2016) 39:302–13. doi: 10.1097/COC.0000000000000278
28. Campbell F, Cairns A, Duthie F, Feakins R. *Dataset for histopathological reporting of carcinomas of the pancreas, ampulla of vater and common bile duct.* (2019).
29. Jamieson NB, Foulis AK, Oien KA, Going JJ, Glen P, Dickson EJ, et al. Positive mobilization margins alone do not influence survival following pancreatico-duodenectomy for pancreatic ductal adenocarcinoma. *Ann Surg* (2010) 251:1003–10. doi: 10.1097/SLA.0b013e3181d77369
30. Strobel O, Hank T, Hinz U, Bergmann F, Schneider L, Springfield C, et al. Pancreatic cancer surgery: The new r-status counts. *Ann Surg* (2017) 265:565–73. doi: 10.1097/SLA.0000000000001731
31. Esposito I, Kleeff J, Bergmann F, Reiser C, Herpel E, Friess H, et al. Most pancreatic cancer resections are R1 resections. *Ann Surg Oncol* (2008) 15:1651–60. doi: 10.1245/s10434-008-9839-8
32. Verbeke CS, Leitch D, Menon KV, McMahon MJ, Guillou PJ, Anthony A. Redefining the R1 resection in pancreatic cancer. *Br J Surg* (2006) 93:1232–7. doi: 10.1002/bjs.5397
33. Campbell F, Smith RA, Whelan P, Sutton R, Raraty M, Neoptolemos JP, et al. Classification of R1 resections for pancreatic cancer: The prognostic relevance of tumour involvement within 1 mm of a resection margin. *Histopathology* (2009) 55:277–83. doi: 10.1111/j.1365-2559.2009.03376.x
34. Chandrasegaram MD, Goldstein D, Simes J, GebSKI V, Kench JG, Gill AJ, et al. Meta-analysis of radical resection rates and margin assessment in pancreatic cancer. *Br J Surg* (2015) 102:1459–72. doi: 10.1002/bjs.9892
35. Yamamoto T, Uchida Y, Terajima H. Clinical impact of margin status on survival and recurrence pattern after curative-intent surgery for pancreatic cancer. *Asian J Surg* (2019) 42:93–9. doi: 10.1016/j.asjsur.2017.09.003
36. Chang DK, Johns AL, Merrett ND, Gill AJ, Colvin EK, Scarlett CJ, et al. Margin clearance and outcome in resected pancreatic cancer. *J Clin Oncol* (2009) 27:2855–62. doi: 10.1200/JCO.2008.20.5104
37. Tummers WS, Groen JV, Sibinga Mulder BG, Farina-Sarasqueta A, Morreau J, Putter H, et al. Impact of resection margin status on recurrence and survival in pancreatic cancer surgery. *Br J Surg* (2019) 106:1055–65. doi: 10.1002/bjs.11115
38. Bilici A. Prognostic factors related with survival in patients with pancreatic adenocarcinoma. *World J Gastroenterol* (2014) 20:10802–12. doi: 10.3748/wjg.v20.i31.10802
39. Li Q, Feng Z, Miao R, Liu X, Liu C, Liu Z. Prognosis and survival analysis of patients with pancreatic cancer: retrospective experience of a single institution. *World J Surg Oncol* (2022) 20:11. doi: 10.1186/s12957-021-02478-x
40. Girgis MD, Zenati MS, King JC, Hamad A, Zureikat AH, Zeh HJ, et al. Oncologic outcomes after robotic pancreatic resections are not inferior to open surgery. *Ann Surg* (2021) 274:e262–8. doi: 10.1097/SLA.0000000000003615
41. Strobel O, Lorenz P, Hinz U, Gaida M, Konig AK, Hank T, et al. Actual five-year survival after upfront resection for pancreatic ductal adenocarcinoma: Who beats the odds? *Ann Surg* (2022) 275:962–71. doi: 10.1097/SLA.0000000000004147